

OREGON CORNER RESTORATION FORM

Township 1 North Range 7 West Sections 4 & 9

County: Tillamook Date: 7-25-1997

Corner Designation: E 1/16 Corner 4/9 X Condition Report Only

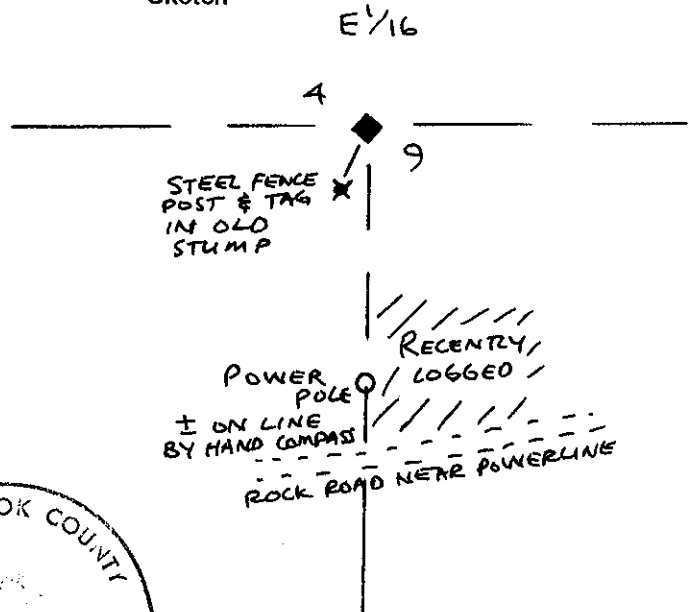
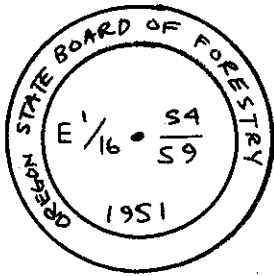
Previous Renewals/Surveys, etc: Not researched.

Monument Found (Condition and Source) : Found 3" brass cap on 2"o.d. galvanized iron pipe, flush with ground surface, marked as shown below. A green steel fencepost is near the Northeast edge of the cap.

Accessories Found: Found green steel fencepost with yellow OSBF (Oregon State Board of Forestry) BT tag marked "E 1/16 = 17.6 N17E D D Davis 5-24-51 199". This fencepost is in a decayed stump, and is roughly 18 feet S17W from the brass cap.
 Note: Oregon LS#199 = Lyle Beyers

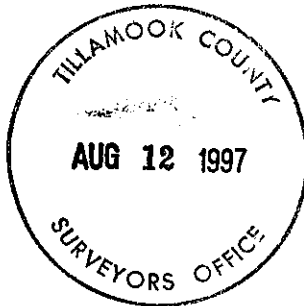
Monument Detail

Sketch



Monument Set: None

New Accessories: None



Location & Comments: Corner falls about halfway up a steep south-facing slope, roughly four hundred feet north of a rocked road running E-W under a powerline. A power pole on the north side of that powerline road is approximately South of this corner. The corner is in a stand of second growth Douglas-fir, with 2 fairly recently windthrown firs about 35 feet west of the corner. The firs near the powerline road have been cut on the east side of a line run South from the corner.

Compass Declination
 Firm/Agency: Willamette Industries
 North Coast Timber & Logging
 PO Box 998
 Seaside, OR 97138
 Party Chief: Andy Blachly
 Notes: Andy Blachly
 Witness:

Surveyor's Seal



Handwritten signature of Andrew T. Blachly

